



INSPIRE



**We commit the future to you Lord Jesus.
You have called us, we are your people.
Open our eyes to see where you are leading.
Open our ears to hear what you are saying.
Open our minds to dreams and visions.
Open our hearts to worship, love and serve.
This day and all days.
Amen.**

MANNOFIELD CHURCH

Scottish registered charity SC 001680

CHURCH CALENDAR

FEBRUARY

Sun 7	10am	Morning Worship
	6.30pm	Evening Worship
Wed 10	10.30am	Midweek Service
Sun 14	10am	Morning Worship
	6.30pm	Evening Worship
Wed 17	10.30am	Midweek Service
Sun 21	10am	Morning Worship with Sacrament of Baptism
	6.30pm	Evening Worship
Tues 23	7.30pm	Kirk Session & Congregational Board meet
Wed 24	10.30am	Midweek Service
Sun 28	10am	Morning Worship
	3.15pm	Craigielea
	6.30pm	Evening Worship

MARCH

Sun 7	10am	Morning Worship with Sacrament of Communion
	6.30pm	Evening Worship

PLEASE NOTE

**The deadline for the next issue of *InSpire* is
Thursday 18 February**

Material for *InSpire* should be deposited in the
Church Office or emailed to:

rodny@mccollassociates.com
office@mannofieldchurch.org.uk

Flower Calendar

FEBRUARY

7 Miss E Thain
14 Mrs C Strachan
21 Mrs L Anderson
28 Miss M & Miss R Archibald



Mannofield Church Lunch Club Come and join us!



18 February
Thereafter
3rd Thursday each month
until May 2010

Lunch is served at 1pm
Entertainment 2 - 3.15pm

A cup of tea before you leave!
Cost -- £3

Need transport?
Contact: Mhairi Clark tel. 317982

MUSICAL EVENING



Mannofield Church
Saturday 6th February 2010
6.30 for 7.00pm

An evening of music and song
to suit all tastes with
Jim and Marisa Addison

Jim and Marisa are very accomplished
performers and will provide an
excellent evening's entertainment

Cost £15 /head including 2 course stovies
supper

Tickets are available from the Church Office
or Social Committee members

THE MANSE

Dear Friends

Advent, Christmas and Epiphany are three pretty important and special seasons of the Church year. All three come together as one and could be described as a spirit conversation; a conversation of preparation fulfillment and the calls to reveal what has been experienced and promised.

It is all built on Christmas. It is Christmas (or God's breaking into the world) that we prepare for; it's the Christmas story that points to the fulfillment of that promise and it is Christmas that is intended to be a springboard from which God's people propel themselves into living in the world as the embodiment of the revelation of God.

What this means in real terms is that we must seek to allow the message of Christmas to so influence us, that the rest of the year round God's promise is visible in our words and actions.

As we move away from Christmas and establish old (and in some cases new) routines once again let each one of us try to live our lives in a way that reveals what we believe in and what we stand for. Let others see in us a visible expression of God's Love. We owe our society and the world nothing less.

Kind regards and warmest blessings for 2010.

Keith

You asked for it!



Is there any area within Christian Faith that unsettles or challenges you?

Is there any Biblical concept or issue that you find hard to understand or accept?

Is there something in your life experience that doesn't fit neatly with what you have been encouraged to accept or feel by the teachings of the Bible?

Now is your chance to challenge the preacher on these things.

During February I invite you to submit particular topics that you would like the ministers to tackle in sermons.

If there is some burning issue or concept you would like us to attempt to preach on then I would ask you to contact me during February by e-mail (minister@mannonfieldchurch.org.uk) or letter (to be left in the office).

Your message should state the topic, issue or concept you would like addressed and briefly (in a sentence or two) explain why.

I will then pick a number of the common points raised and Alisa and I will attempt to address these as best we can in a sermon series after Easter.

It will certainly be a challenge but I am ready to receive your requests!

Keith



Connecting the world to tackle climate change Lights out!

On Saturday 27 March 2010 at 8.30pm

WWF's Earth Hour is an inspiring message of hope and action – a global demonstration about climate change. WWF wants a billion people across the world to turn off their lights for an hour – WWF's Earth Hour. It aims to unite the world's people to demonstrate their concern about climate change.

It will let world leaders know the world is still watching, following the 2009 UN Climate Summit in Copenhagen and expects them to take urgent action to tackle climate change.

Earth Hour 2009 was hugely successful, reaching millions of people across the world.

In Scotland more than ten thousand people took part and lights went out in each of Scotland's six cities as well as on the nation's most iconic landmarks, including the Forth Rail Bridge, the Clyde Arc and Stirling Castle.

It's time to show we care about the world– its natural environments, people and wildlife.

WWF's Earth Hour 2010 aims to reach hundreds and thousands of people in more than 5,000 cities across the world to encourage them to add their voice to the ever growing global call for action on climate change.

Whether you are a business, local authority, school, community group or individual, please take part. If you'd like more information just get in touch – email Scotland@wwf.org.uk or phone 01350 728200

Church Statistical Returns.....sobering reading



Each January in the Church of Scotland every congregation is obliged to send to '121' a statistical return that reveals among other things the fluctuations in congregational numbers and calls for an entry to be made that notes the number of congregational members who have died in the past year.

I wanted to share with you my reflections on these returns. It may be somewhat sobering but ultimately I feel these are statistics we should be realistic about.

In this past year the number of deaths of congregational members exceeded 40. I have filled three such forms in during my time as minister of Mannofield and totalling this statistic for the three years sees the number of deaths of congregational members approaching 150.

Now, these figures might seem shocking but they point to a reality that we should as a congregation be aware of and accept. This cycle of loss has been the reality for many more years than I have been minister and sadly will continue in the coming years. We don't have to be statisticians to work out quickly that if 150 of our members have died in 3 years then in the next 9 years we might expect further losses of 450.

Statistics they say don't lie. As minister of Bearsden North Church between 1997 and 2007 I think the total death numbers of congregational members amounted to 100. (Perhaps a little more). The congregational roll there may have fallen by about 100 over the

course of my ministry there, but significantly for the last two years of my time as minister of Baljaffray Parish Church (which began as one part of Bearsden North Church) that congregation was growing at the rate of 20-30 in number in each year. You will understand that when a congregation is growing the statistical return is something to be inspired by. I paid a lot of attention to the roll numbers as they were an indication of what we were trying to achieve as a congregation that sought to reach out in mission to the Parish and grow in influence and numbers. The statistics showed we were doing a pretty good job.

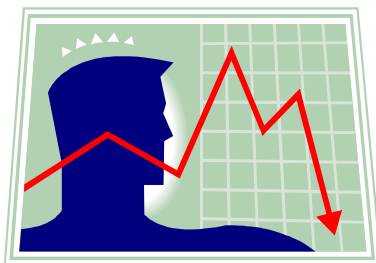
So, why I am I sharing this very sobering statistic with you at this time?

In the first instance I bring this to your attention as a reminder of the need to be supportive and kind to the members of our congregation who bear the weight of grief daily. The figures point to the fact that many in our congregation have suffered loss in these past years. It is the responsibility of all of us to care for our friends and fellow members and to support and encourage them.

There is a second reason for bringing this to your attention. There is a need for us as a congregation to be realistic about the changing times we live in. I can assure you that I and the rest of my ministry team are working extremely hard. We are devoting all our energies and talent into the work of leading this congregation pastorally and in the wider sense of leadership too.

Together with the Kirk Session we have been tirelessly working away in the last few years to build the right foundation for Mannofield as we seek to achieve something in the years that will follow.

Continued on page 13



Q What is your age, occupation, marital status and family?

A Age 35, Associate Minister -Young Peoples Ministry, Torry St Fittick's Church (Part-Time) Married to Keith; Children – Aaron (9), Finlay (7), Angus (5)

Q What is your favourite verse from Scripture?

A Isaiah 40: 31 – 'But those who trust in the Lord for help will find their strength renewed. They will rise on wings like eagles; they will run and not get weary; they will walk and not grow weak.'

Q What is your favourite character from the Bible?

A Very difficult to choose one, but I am going to choose Esther for her courage and faith.

Q What motivates you spiritually?

A The challenge to be God's love in action.

Q It's not cool but.....

A But I love to watch the television programme 'Neighbours'.

Q What was the best piece of advice you've ever been given?

A 'Don't sweat the small stuff'.

Q Who is your favourite fictional character?

A Jamie Fraser from Diana Gabaldon's series of books called 'Outlander'.

Q What are you afraid of?

A Off the top of my head nothing significant.

Q Did you have a nickname growing up?

A Beanie. Evolved from: Katrina - Trina - Trine the Bean – Beanie!

Q What situations make you lose your temper?

A Typical wife and mother issues!!!

Q If you could choose a profession that you would like to try what would that be? Why?

A Rally driver.

Q If you could change something about yourself, what would it be?

A I would like to be two inches taller.

Q If you could travel back in time, where would you go?

A Ancient Egypt.

Q What would you do if you ruled the world?

A Enforce Climate Change policies to stabilise the earth's climate.

Q On what purchase have you spent most apart from a car or property?

A An air ticket to Pakistan.

Q Who or what is the love of your life?

A Who else but Keith! (He will be reading this!!)

Q What is your most treasured possession?

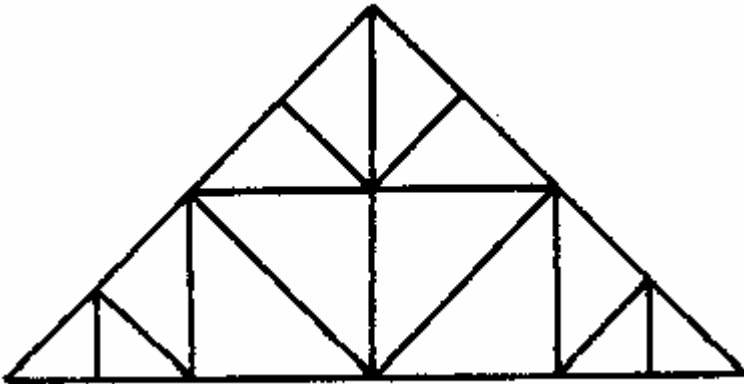
A My three boys.

Q What has been your greatest achievement?

A Having suffered from Post Viral Syndrome for a long number of years, I feel that completing a University Degree, caring for my family, and for the last nine months working part-time, are my greatest achievements.

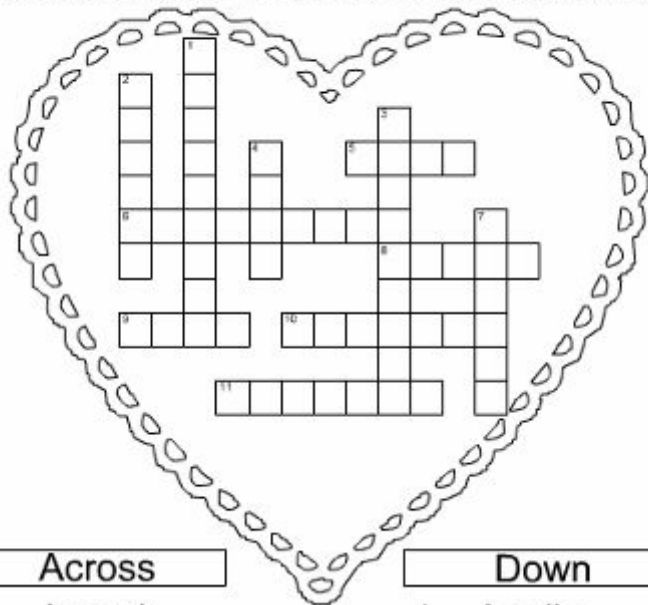


How many triangles are there
in the diagram below?



Valentines in the Bible

Solve the puzzle by writing the "Valentine's" name for each person given in the clues.



Across

5. Joseph
6. Zechariah
8. Abraham
9. Eve
10. Isaac
11. Samson

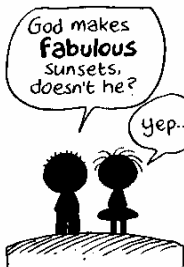
Down

1. Aquila
2. Ahasuerus
3. David
4. Ruth
7. Jacob

©A Kid's Heart - akidsheart.com

the mouths of babes

by Roy Mitchell



CHILDREN'S SEVENS

Find the answers to the clues and fit them in place.
If your answers are correct, the central down column
should give you another well-known Bible character.

Jesus often walked the shores of this sea

The title given to Jesus

The home of Mary, Martha and Lazarus

Jesus spoke mainly in this language

Known especially for cedar trees

The wife of Isaac

A learned Jew and great preacher (Acts 18).

RIDDLE-ME-REE (Genesis 8:8-11)

My first is in BUILD but not in ARK
My second's in FLOOD and CLOUDS so dark
My third is in LIVING so squashed there inside
My fourth is in WATER and RIVER and TIDE
My whole brought an olive leaf that she had found
So Noah was sure there was now some dry ground.

Can you solve the riddle above?

D N Z K F B E P H E S U S J Q E M O R X
 U Q M G H A E I R O J H O S M T J C H K
 L J V S W Y N U C V G C M V R L P O M I
 N X M I Y R U P V Q M O F H S V R L Y D
 B I T P Q U A M L E I I Y G Y X F O X Q
 N Z E E V U B S M F V T P Z U Z E S V O
 Y S G P B Q F N Y B F N D F W H R S Y E
 S R Z J Z P G E P C J A J C P F M A G I
 I J H X W A T H I I Y S M N B E U E D W
 B X L J L Q Y T R K Q R H T R V A M M P
 I K A A A P H A H T A E Y Y E J N U E A
 W V T V A C I N O L A S S E H T R M H R
 P I O U V R S P H Z Y U B D N H E A E T
 A B Y U N S U C S A M A D A L G P G L S
 O U K T C W B Z T S B V Z M S Z A R H Y
 X Z J E R V F K L H L A H L A O C E T L
 H C N A U O B Z C U R C M D G I I P E M
 M W B E N M A R U E P H I L I P P I B O
 L S A R D I S S T P R U C O R I N T H W
 D P T I E Y X H M I L E T U S A P P O J

Antioch

Athens

Bethlehem

Capernaum

Colossae

Corinth

Damascus

Ephesus

Galatia

Joppa

Lystra

Miletus

Nazareth

Pergamum

Philippi

Rome

Sardis

Thessalonica

Troas

©A Kid's Heart at akidsheart.com

December's solution:- Prancer is the oldest Reindeer and Blitzen is the youngest.



The long-term future of Mannofield Church depends to a considerable extent on the young people currently involved in our various youth organisations. It was with this in mind that the Kirk Session gave approval at their meeting on December 8 for our young attendees to be welcomed at a future Communion service.

Following some instruction from Keith or Alisa, those youngsters who have indicated a desire to be part of this special event in Christian worship will be welcomed at the 2010 Advent Communion.

There was further focus on the young when Youth Worker Tim Still appealed for volunteers to assist in the Youth Café which he is organising on Mondays (4pm to 5.45pm). Donations in support of this venture have been received from Braeside Community Council and Councillor Jill Wisely.

Among the various committee reports submitted to Session, the Social Committee reported that the recent “Sing-a-long” had been successful. Forthcoming events include a Musical Evening on February 6 and a Flower Festival in mid-March.

The Young People and Families Committee intimated that events planned for next Easter would be along similar lines to that of 2009 with a Quiz Night scheduled for May 21.

The Development Committee reported that the architect is now proceeding with plans to improve the flexibility of the halls. A full report will be submitted to the February meeting of Session.

Most readers of this article will, with deep regret, be aware of the recent death of John Stewart, which came shortly after Session had, at their December meeting, accepted his request to be transferred to the retired elders’ roll, with tributes being paid to his contribution to the life of Mannofield Church over a lengthy period.

Session were also informed of the recent death of Craig Campbell, with sympathy being expressed to his family. The next Session meeting is scheduled for Tuesday, February 23 (7.30pm)

Alisa's stole

After much interest in the topic, I am sitting down to explain my purple liturgical stole.

This special stole is made in the cottage industry in the Lake Atitlan region of Santiago, a small village which is the capitol of the Tzutujil Maya nation, in Guatemala.

The stole was purchased through a fair trade organization called UPAVIM* Fair Trade Crafts. The organization makes a wide range of products. They exist as a cooperative of approximately 80 women who live in marginalized communities on the outskirts of Guatemala City.

The women in the organization are all mothers and homemakers, some widows, and some abandoned. Many of the women are the sole providers of economic support for their families. The mission of UPAVIM is to empower these women in their community, enabling them to improve the quality of life for themselves and their families by providing access to education and employment opportunities, health and child care services, and personal and professional developmental programs.*

The making of this style of clerical stole was introduced by a martyred priest, and the technique has been passed down for hundreds of years through the members of this village. This specific stole can be worn during the liturgical seasons of Advent and Lent, and is decorated with various Christian symbols, including crosses, fish, church, dove, wheat and a basket of bread.

The **fish**, or Ichthus (ἰχθύς), is one of the earliest symbols for the Christian faith. The fish naturally became a symbol based on the number of references to the fish, fishing, and fisherman in the New Testament. The word was then used as an acrostic, forming words based off each of the letters. The acrostic for ichthus reads: "Jesus Christ, God's son, Saviour."

The **dove**, represents the Holy Spirit. This image is common throughout Christian art, and refers to the baptism of Jesus in the Jordan River when the spirit of the Lord in the form of a dove descended upon him.

The **anchor** is another very early Christian symbol that has been found throughout the catacombs. It brings together the cross and the various nautical Christian symbols (fish, boat, fishermen), it symbolizes Christian hope in the salvation of Christ and holding secure in our faith. The anchor is also the symbol of St. Clement of Rome who, tradition says, was martyred by being tied to an anchor and thrown into the sea.

The **wheat** and **bread** are symbols of prosperity and fruitfulness. It represents the most basic sustenance of life, and the Body of Christ. Christ used bread and wine at the Last Supper before His death on the cross to institute the rite of Holy Communion and proclaimed, "I Am the Bread of Life."

The **"Chi-Rho"** which is the letters "X" and "P," represents the first letters of the title "Christos." The letters were eventually put together to form this symbol for Christ. It is this form of the Cross that Constantine saw in his vision along with the Greek words, "En touto nika" ([Εν τούτω νικά](#)) which are rendered in Latin as "In hoc signo vinces" which translates as the famous "in this sign thou shalt conquer."

Grace and Peace, Alisa

*Information about UPAVIM is taken from their website:<http://www.upavimcrafts.org/> where all their products are available for purchase.





But no matter how hard we will work and how successful that work will be, the reality is the roll will continue to fall in the years to come because of the number of congregational members who will die. While success in some congregations can be measured in the statistical return, our own success cannot be measured in that way.

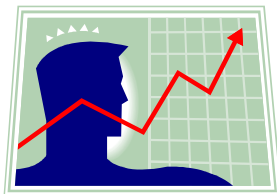
Over the last two years I have noticed that sometimes the number of people attending church on a Sunday has reduced. At times I might be inclined to take this personally as any minister would but the reality is I think (and I hope!) that with the death numbers as they are, and the fact that each year more and more of our still loyal members find it increasingly difficult physically to get to church and sit through services, this fact is understandable and merely a sign of the reality we face.

I think it's important for all of us to recognise the reality of our situation because it is so easy to find a cause for falling numbers in the wrong things.

In writing about these things my intention is not in anyway to be pessimistic or 'un-inspiring'.

It is not in my nature to feel or think like that and I encourage you as a congregation not to think like that either. Sometimes being realistic can in fact be 'inspiring' and that's the way I feel when I reflect on these things and I hope perhaps you too might feel like this. We can be inspired by the challenge of being part of this great Church at a time when God is asking us to think and exist in a new way.

There are lots of good things taking place in the Church today, and I know that the years to come will be full of wonderful opportunities. Looking at the year ahead I see some exciting things to look forward to such as a review of our building, the increased activities we offer our young people, the increased use of our halls by community groups and importantly the planning that is about to begin towards an outreach and mission to the parish.



It is a fun time to be part of Mannofield as we seek to establish a new model for our church that is built on a realistic sense of what we are now and what we seek to be in the future.

One thing I know for sure is that we cannot afford to concentrate our energy on the drive to maintain numbers.

We must instead focus our energies on making Mannofield an inspirational place to be part of for all our Church members and a place that makes outreach and mission to our surrounding area the main focus of our existence.

We want to grow our church in terms of influence and reputation. We can achieve this together by recognising the challenges of our time, supporting each other and the work of the Church as we remain loyal to Mannofield in all that we take part in, and support, within the life of the Church.

NOTES & NEWS

Mannofield Guild

Family Soup & Sandwich Lunch

Saturday 20 February

12 till 2pm

Adults £4 Children £2.50

All welcome
Proceeds in aid of Guild Projects

EVENTS DIARY

FEBRUARY

- Tues 2 Something Nostalgic, Video
Thurs 4 Monthly Coffee Morning
Tues 16 Something Informative
Sat 20 Soup & Sandwich Lunch

MARCH

- Tues 2 Something Local,
Hammerton Stores



Retiring Collections



The collections on Advent Communion Sunday and on Christmas Eve resulted in £774.77 being sent to

Instant Neighbour.

The amount donated on 'Souper Sunday' for the Church of Scotland HIV/AIDS project was £568, of which £520 was Gift-Aided.



The Retiral Offerings at the March Communion will be sent to the Aberdeen Presbytery Malawi Partnership Committee to help fund the visit of 20 of our fellow Christians from Blantyre Presbytery, Malawi to Aberdeen in September.

A New Face at Mannofield

A new face will be part of things at Mannofield for the next 6 months. Graham Wintour has entered a period of Enquiry within the Church of Scotland. The Church operates a system now for those individuals who are considering a vocation as a Minister. Before attending a National Assessment Conference each individual is obliged to be attached to a congregation for 6 months. This allows for the individual to experience and participate in a variety of ministry functions before attending the Assessment conference where a decision is made on his/ her suitability.

Please welcome Graham and his fiancée Tineke as you see them about Mannofield.

CONGREGATIONAL REGISTER

Baptisms

6 Dec Gabriel Steven Wright
10 Jan Kirsty Diane Cooper
10 Jan Jake John James Russell
17 Jan Logan Alex Fraser

Deaths

21 Nov Mr Hugh Willox
19 Dec Mr Jim Smart
28 Dec Mr Peter Crichton
5 Jan Mrs Marion Nicol
8 Jan Mr John Stewart
16 Jan Mrs Gertrude Tennant

Disjunctions

Mrs Meg Ord

Change of Address

Mrs Isobel Spalding
Mr & Mrs John Rennie
Mrs Violet Innes
Mrs Alexandrina Clyde

New Members

Mrs Joyce Anderson

With the Guild to Palestine and the Holy Land

The Guild's theme for 2009-2012 (Act justly, Love Mercy and Walk humbly with God) presents us with a fundamental challenge. The World Mission Council meets this challenge directly in its work in Israel and Palestine.



As the prospect of some resolution of the conflict ebbs and flows, it becomes ever more necessary to support those who refuse to accept the inevitability of conflict and the impossibility of any reconciliation.

Through its contacts with the Christian, Jewish and Muslim communities in Israel and Palestine, the World Mission Council offers the Guild an opportunity to support the work of reconciliation by helping us to be better informed, by making available ways for us to provide support and most importantly for me by offering a chance to visit and meet those involved in the Projects.

The Ecumenical Accompaniment Programme in Palestine and Israel (EAPPI) provides a protective presence to vulnerable Palestinian communities, monitoring human rights abuses and supporting non-violent protests against the Israeli occupation.

Rabbis for Human Rights (RHR) are also being supported through the Interfaith action group in their endeavours on behalf of the Bedouin community at Jahalin, whose very existence is not recognised by the Israeli authorities.

Interfaith also supports the Jayyous Community Project in developing a kindergarten. Since the construction of a separation barrier, the children are unable to play outside and although there are playgrounds in Qalqilya it is expensive and dangerous to travel there.

Besides meetings with all these groups there is going to be opportunities to sail on the Sea of Galilee, visit Bethlehem and Nazareth, see the Old City of Jerusalem and "swim" in the Dead Sea. I can hardly wait!

Rhoda K Wright

CHURCH CONTACTS

Minister	Rev Keith Blackwood	k5blackwood@btinternet.com	315748
Associate Minister	Rev Alisa Ferlicca	alisa.ferlicca@gmail.com M 07838 835778	277428
Youth Ministries Worker	Tim Still	tj.still@btinternet.com M 07535 356346	
Secretary	Mrs Gill Terry	office@mannofieldchurch.org.uk	310087
Church Officer	Nick Youngson	nicholas.youngson@talktalk.net M 07850 733402	322239
Session Clerk	Bob Anderson	Nnikibob@aol.com	743484

Caged Bird

A free bird leaps
on the back of the wind
and floats downstream
till the current ends
and dips his wing
in the orange sun rays
and dares to claim the sky.



But a bird that stalks
down his narrow cage
can seldom see through
his bars of rage
his wings are clipped and
his feet are tied
so he opens his throat to sing.



The caged bird sings
with a fearful trill
of things unknown
but longed for still
and his tune is heard
on the distant hill
for the caged bird
sings of freedom.

MAYA ANGELOU

Maya Angelou has a life-time appointment as Reynolds Professor of American Studies at Wake Forest University of North Carolina. She has written much that reflects the bitterness and injustice of slavery, and colour prejudice in America.